

Carpenter's Market



103 S. Columbus St.
Somerset, OH
740-743-1339

June 1st-7th

All prices subject to change & while supplies last
Check out our website: www.carpentersmarket.com

Store hours:
Sunday: 8AM-6PM
Mon.-Sat.: 8AM-8PM

Meat Specials

Boneless Beef Ribeye Steaks
\$16.99/lb.



Boneless Beef Chuck Roast
\$7.99/lb



Fresh Bratwurst
\$5.99/lb.



Bone-In Center-Cut Pork Chops
\$3.99 /lb.



Fresh Chicken Wings
\$2.99/lb.



Tray Packed Bone-In Split Chicken Breast
\$2.99 /lb.

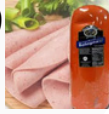


Deli Deals

Cherrywood Smoked Ham
\$5.49/lb.



Walnut Creek German Bologna
\$3.99 /lb.



Butterball Oven-Roasted Turkey Breast
\$6.99 /lb.



Monterey Jack Cheese
\$4.99/lb.



Mini Colby Cheese
\$4.99/lb.



Guggisberg Baby Swiss Cheese
\$5.49 /lb.



Fresh Produce

Seedless Watermelons
\$5.99 each



Bulk Vidalia Onions
\$1.29/lb.



Dole Garden Salad
2/\$3
\$1.50 each



Grape Tomatoes
\$2.99/pint



Idaho Baking Potatoes
2/\$1
\$0.50 each



Bi-Color Sweet Corn
4/\$3
\$0.75 each



Grocery Items Refrig./Frozen Dairy

Buffalo Wild Wings Sauces
\$3.79 each
12 oz.



Prego Pasta Sauces
\$3.59 each



Johnsonville Smoked Brats
All Flavors
\$4.99 each
14 oz.



Prairie Farms Whole & 1% Choc. Milk Gallons
\$4.90 each



Bush's 16 oz. Baked Beans
All Varieties
2/\$5
\$2.50 each



Smucker's Sundae Toppings & Magic Shell
\$3.29 each



Cool Whip
8 oz. containers
Original or Zero Sugar
2/\$5
\$2.50 each



Prairie Farms 2% 1%, & Skim Milk Gallons
\$4.70 each



Pepsi Brand 12 Pack Cans
2/\$13
\$6.50 each



Gatorade 28 oz.
All Varieties
\$1.99 each



Blue Ribbon Sundae Cones
\$6.99 each
8 pack



Smith's 24 oz. Cottage Cheese
\$3.79 each



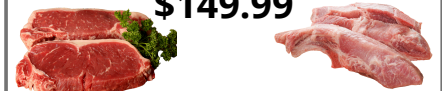
Featured Meat Box

View the complete meat bundle list on carpentersmarket.com or Facebook.

#8 Super Combo Box

- 2- 16 oz. Ribeye Steaks
- 2- 12 oz. Strip Steaks
- 4 lbs. Pork Sausage
- 4 lbs. Pork Loin Chops
- 4 lbs. Pork Western Ribs
- 4 lbs. Gr. Chuck
- 4 lbs English Roast

\$149.99



Meat Boxes are NOT made until ordered.
Expect longer order wait times during high volume periods.